

# Coburg to Campbellsville

69-kilovolt transmission line project



**EAST KENTUCKY  
POWER COOPERATIVE**

A Touchstone Energy Cooperative 



## About Our Open House

Local property owners are encouraged to attend our Open House to help us gather information.

The Open House is a key way we keep property owners involved and informed every step of the way when building a transmission line.

Thank you for your cooperation as we work together.

## About This Project

### **About the Coburg to Campbellsville transmission line project.**

This is a project to construct approximately 11 miles of new 69-kilovolt electric transmission line. East Kentucky Power Cooperative (EKPC) plans to purchase 100 feet of right-of-way for the transmission line.

### **Why does EKPC need to build this particular line?**

This project will help to maintain reliable electric service for Taylor County RECC members by enhancing transmission system support and redundancy in the area.

### **Why has the study area been revised for this project?**

In 2024, EKPC developed a study area for this transmission line project using a methodology that comprehensively takes into account data and information about the natural, built and engineering environments, and identifies suitable alternative corridors for linear projects such as overhead electric transmission lines. The original data indicated a conservation easement on a central parcel, which—in combination with numerous other obstacles, including potential multiple Green River crossings, development along Ky. 55, state park property, U.S. Army Corps of Engineers property and designated historical preservation areas—caused the original study area to swing to the west. EKPC conducted a public meeting regarding the original study area on Aug. 8, 2024. Subsequently, after reviewing public feedback, performing an aerial topographic survey of the study area and updating data, EKPC discovered changes in land use and designation. This included newly built homes and the removal of the conservation easement. Analysis applying these updates resulted in the revised study area, a portion of which is located east of the original study area. The revised study area is shorter and maintains one river crossing.

### **What approvals must be secured for this project?**

The Rural Utilities Service, an agency that administers the U.S. Department of Agriculture's Rural Development Programs (USDA Rural Development), must ensure that EKPC meets appropriate environmental obligations including compliance with the National Environmental Policy Act, the National Historic Preservation Act and the Endangered Species Act.



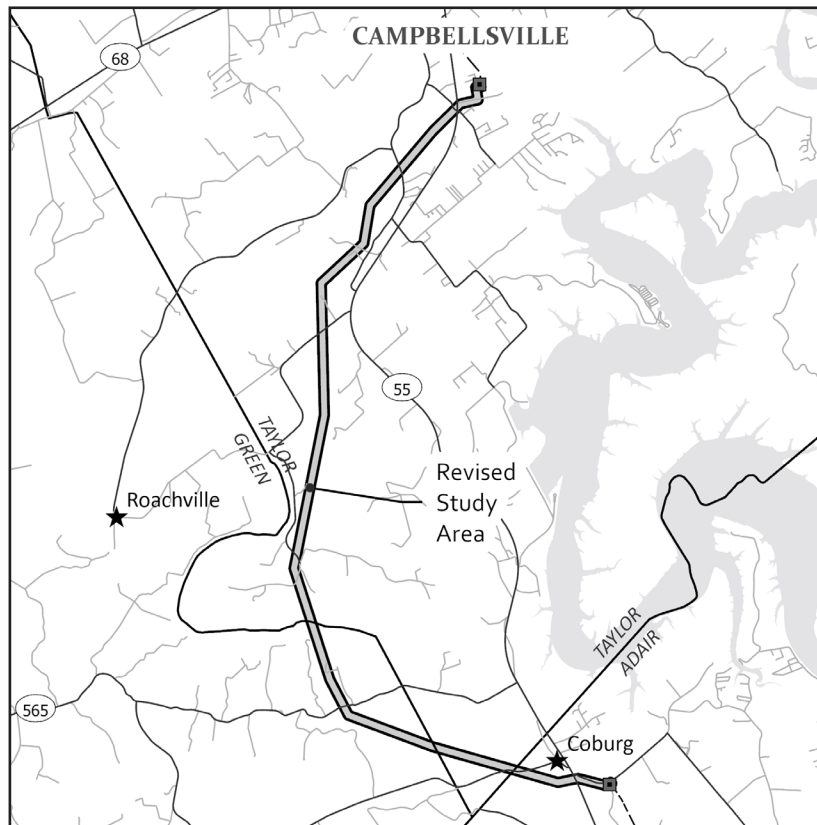


## Line Location

### Where will the line be located?

East Kentucky Power Cooperative (EKPC) plans to construct a new 69-kV transmission line in Adair, Green and Taylor counties.

EKPC plans to construct the line within the study area displayed in the map below. From EKPC's existing Coburg Substation, located on Cane Valley Road in Adair County, the transmission line will extend north to the Heartland Park Substation near the intersection of Ky. 55 and the Campbellsville Bypass, south of Campbellsville.

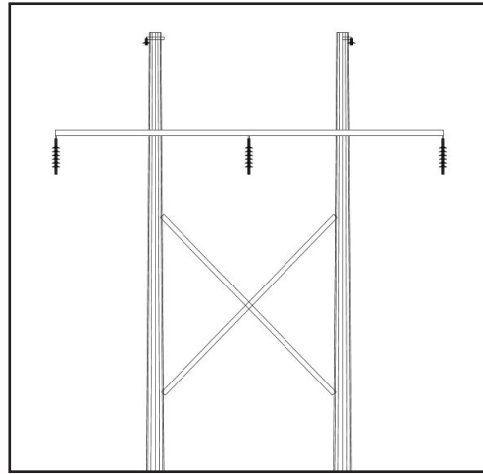
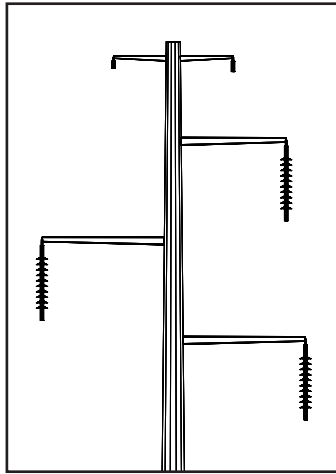




## Line Appearance

### What will the line look like?

This project will use a mix of single- and double-pole construction. Below are drawings of the typical structures that will be used for the project. EKPC plans to use galvanized steel poles for this project.



## Project Schedule

Open House conducted	March 25, 2025
Corridor mapping/surveying	February-April 2025
Right-of-way negotiations	September 2025-March 2026
Structure stakeout	Beginning Spring 2026
Tree clearing	Spring 2026 to Fall 2026
Construction	Summer 2026 to Fall 2027





## About Us

Winchester-based East Kentucky Power Cooperative is a not-for-profit electric utility that generates and transmits energy to 16 Touchstone Energy Cooperatives across the state. These cooperatives distribute the energy to more than 1.1 million people in Kentucky. Together, we work to improve the quality of life of those we serve.



### What a cooperative is

A cooperative is a not-for-profit business that is owned and democratically governed by its members. A co-op exists solely to serve its members.

### What “not-for-profit” means

A not-for-profit cooperative is in business for the public good rather than for the financial benefit of an individual owner or stockholders.

### Why we build power lines

Power lines are built to keep pace with growth in Kentucky. Power lines transport electricity like roads carry traffic. If there is too much traffic on a power line, though, the line overloads and people lose power. We build lines to avoid that problem.

### Why we can't bury lines

While burying lines is more pleasing to the eye and protects them from ice and weather, the cost of burying lines is prohibitive. Line repairs are also extremely difficult and time consuming. It can cost as much as 10 times more to construct underground transmission lines.



**The process we use to build lines**

After the Open House, EKPC will finalize a centerline for the power line. Affected property owners will be notified. If your property is affected, we will seek permission to conduct a survey to confirm the centerline. Negotiations then begin on a payment to affected landowners for the right to run the line across their land. Our goal is always to minimize costs and the impact upon you and your community.

**How we choose line routes**

We use an objective methodology and computer model developed to strike a balance between a number of factors, including community impacts, geography, environmental impacts and costs. The factors considered in the model were developed with public input and we are able to incorporate public input as we refine the route location.

**About rights-of-way**

If your property is crossed by this project, EKPC will seek to purchase an easement that allows the cooperative to locate its poles and wires on your property, and to enter the property as needed for maintenance. The property owner will continue to own and use the property. The easement allows EKPC to clear and control trees within the right-of-way, as well as other trees that could interfere with transmission lines, and prevents structures from being constructed in the right-of-way.

**How we value property**

We conduct a market analysis of the area based on recent property sales and assess the impact the line would have on any particular property.

**How we work with property owners**

Our professionals will work with you respectfully, and we will work closely with each property owner who is affected by any phase of the construction. It is our goal to make sure that property owners are well-informed about the project and have ample opportunity to discuss it with us.

**What about environmental impacts?**

Our biologists do extensive work prior to project construction in order to assess the environmental impact. The biologists work to ensure EKPC minimizes and avoids impacting endangered plants and animals during line construction.

**How property owners and local communities provide input**

The input of the community and affected property owners is of primary concern. We host open houses to share and gather information, and we strive to keep property owners and others fully informed about construction projects.

**Empowering Rural America program**

This project has been identified as a potential project available for federal funding under the Empowering Rural America program (New ERA) under the Inflation Reduction Act being administered by the Rural Utilities Service, a Rural Development agency of the United States Department of Agriculture.

To support the requirements of this federal funding, East Kentucky Power Cooperative (EKPC) is developing a community benefits plan (CBP). CBPs are intended to outline how projects will benefit local residents, address local concerns about negative project impacts, and enhance community support. If you are a resident within one mile or a farmer within five miles of the project, we encourage your engagement to support development of the CBP.

For information on the project, to engage and provide feedback please visit <https://www.ekpc.coop/new-era-projects> to participate. To move the CBP forward, we request your engagement within two weeks of this open house.





## About Our System

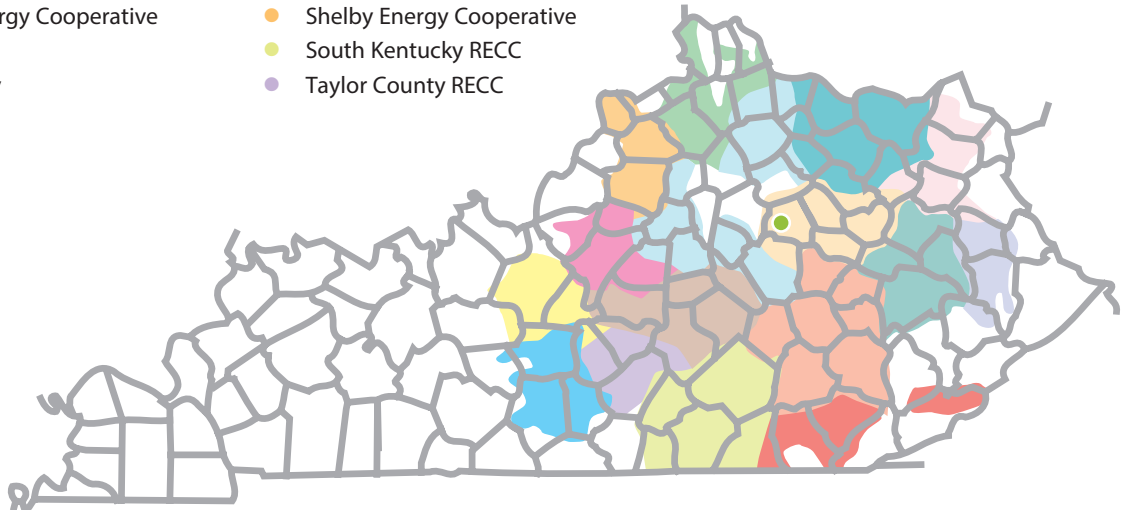
### East Kentucky Power Cooperative Service area

EKPC is a not-for-profit generation and transmission utility with headquarters in Winchester. EKPC generates electric power and transports it to 16 locally-owned cooperatives that distribute it to homes, farms, businesses and industries, serving 1.1 million people in 89 Kentucky counties. Together, EKPC and its owner-member cooperatives are known as Kentucky's Touchstone Energy Cooperatives.

EKPC's 16 owner-member cooperatives include:

- Big Sandy RECC
- Blue Grass Energy Cooperative
- Clark Energy Cooperative
- Cumberland Valley Electric
- Farmers RECC
- Fleming-Mason Energy Cooperative
- Grayson RECC
- Inter-County Energy
- Jackson Energy Cooperative
- Licking Valley RECC
- Nolin RECC
- Owen Electric Cooperative
- Salt River Electric Cooperative
- Shelby Energy Cooperative
- South Kentucky RECC
- Taylor County RECC

● EKPC headquarters





4775 Lexington Road, 40391  
P.O. Box 707,  
Winchester, KY 40392-0707  
Telephone: 859-744-4812  
Fax: 859-744-6008  
[www.ekpc.coop](http://www.ekpc.coop)

